

SCOPE OF WORK

I-Drive Signage & Wayfinding Master Plan

To reinforce the I-Drive District Branding and improve Wayfinding signalization to destinations for residents and visitors



General Updates

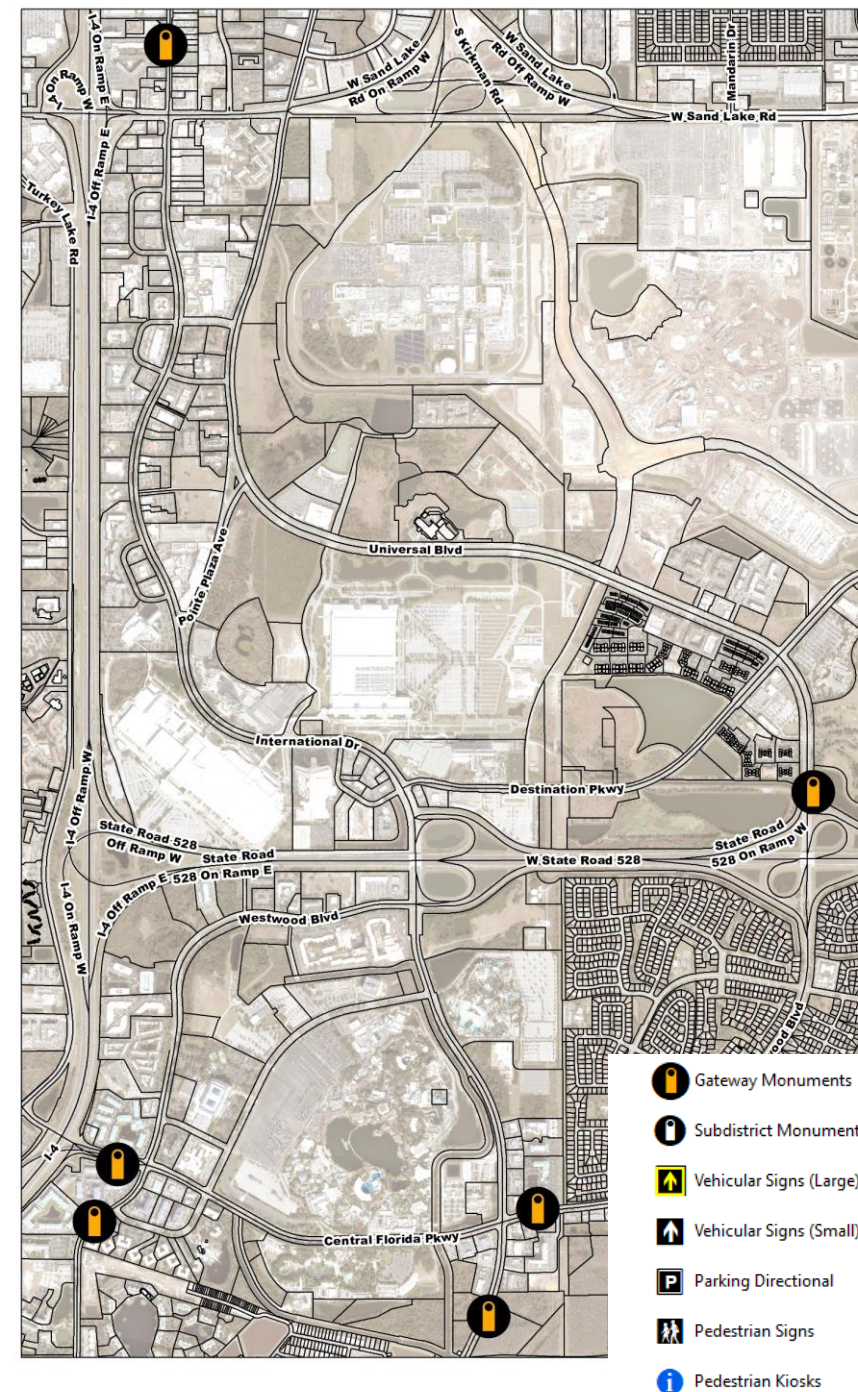
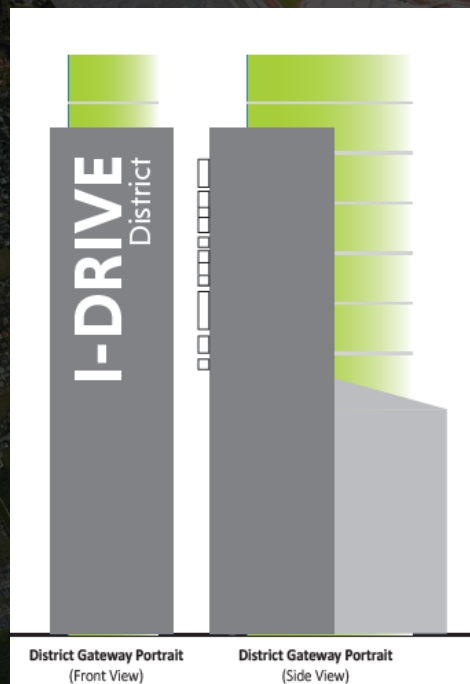
- Location Walks for Phase One – Completed June-July 2023
- Shop Drawings for Phase One Under Review
- Mock Ups for Each Sign Type being constructed chronologically (see image at right)
- Phase Two Location cross referencing is underway
- Content Schedule nearing completion
- Electric coordination ongoing



**Small Vehicular Wayfinding Sign Mock Up
(Sans Content Blades)**

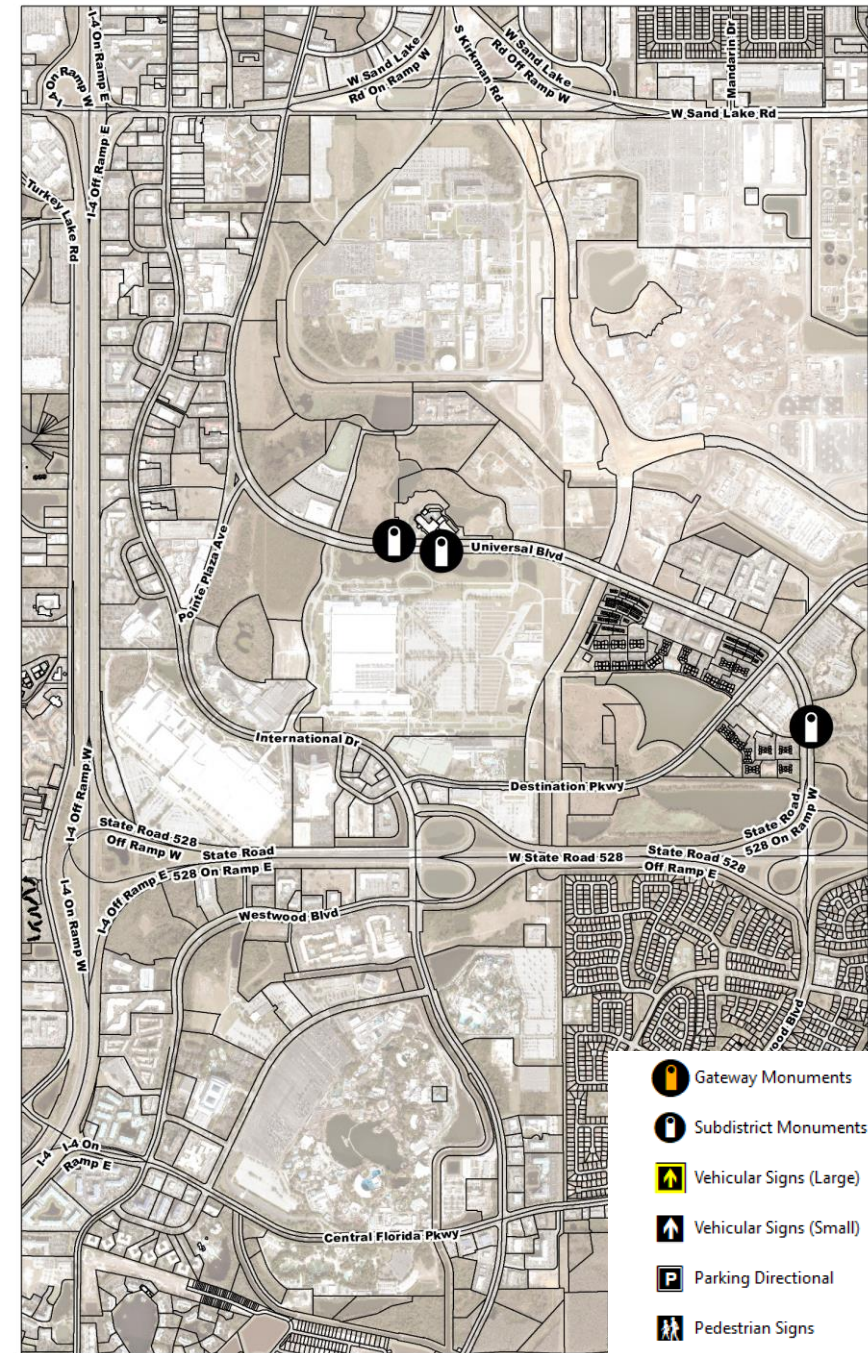
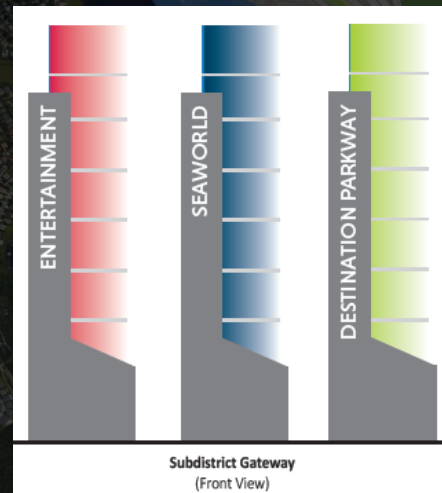
Updates on Phase One Locations

- 47 Signs – decreased due to additional CIP impacts (removed signs moved to Phase Two)
 - Targeted Install Phase One Early 2024 (Halfway Point of Project is March 2024)
- Composition
 - Gateway Monuments (6)
 - Subdistrict Monuments (3)
 - Vehicular Signs – Large (9)
 - Vehicular Signs – Small (27)
 - Parking Directional (2)



Updates on Phase One Locations

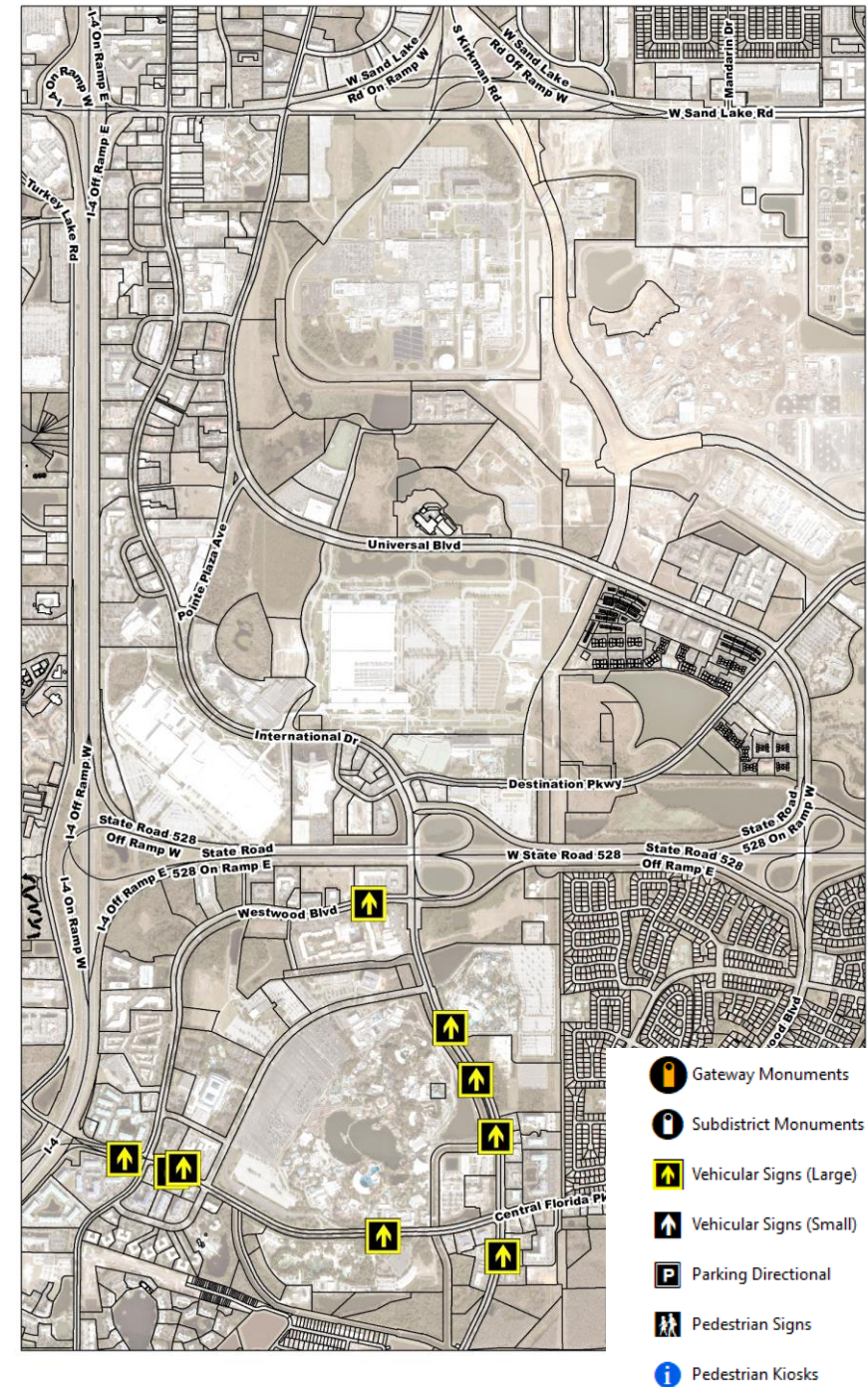
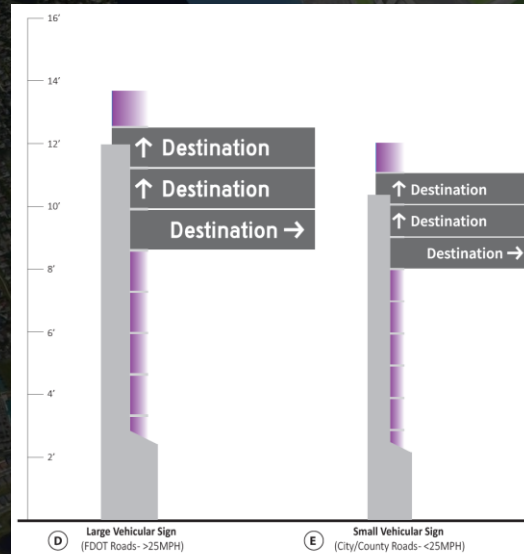
- 47 Signs – decreased due to additional CIP impacts (removed signs moved to Phase Two)
 - Targeted Install Phase One Early 2024 (Halfway Point of Project is March 2024)
- Composition
 - Gateway Monuments (6)
 - Subdistrict Monuments (3)
 - Vehicular Signs – Large (9)
 - Vehicular Signs – Small (27)
 - Parking Directional (2)



- Gateway Monuments
- Subdistrict Monuments
- Vehicular Signs (Large)
- Vehicular Signs (Small)
- Parking Directional
- Pedestrian Signs
- Pedestrian Kiosks

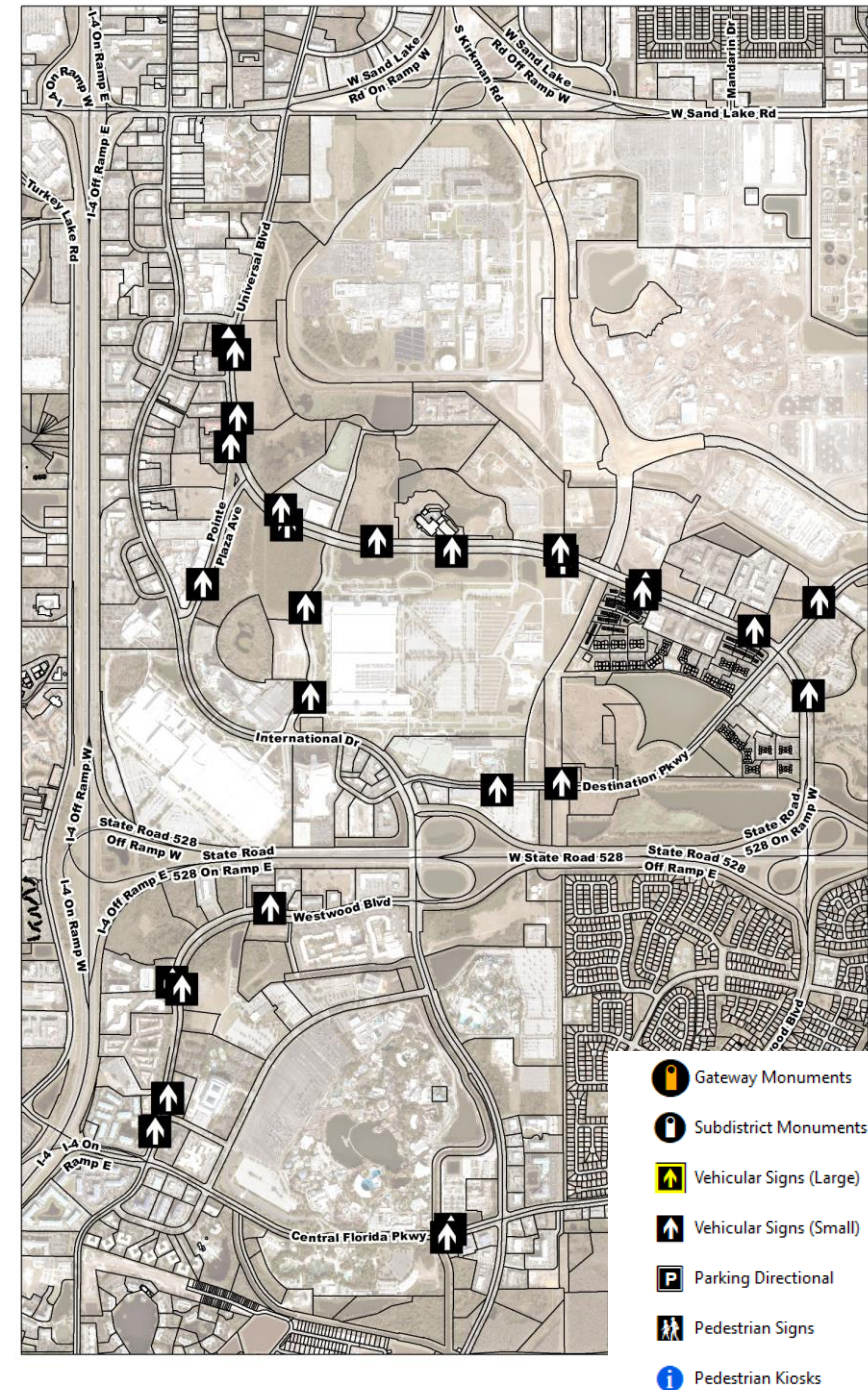
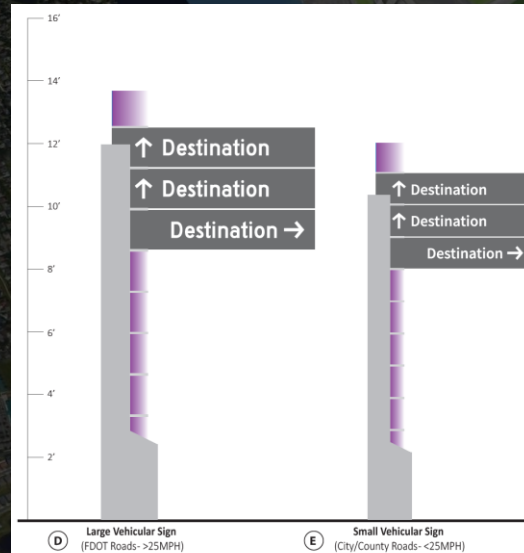
Updates on Phase One Locations

- 47 Signs – decreased due to additional CIP impacts (removed signs moved to Phase Two)
 - Targeted Install Phase One Early 2024 (Halfway Point of Project is March 2024)
- Composition
 - Gateway Monuments (6)
 - Subdistrict Monuments (3)
 - Vehicular Signs – Large (9)
 - Vehicular Signs – Small (27)
 - Parking Directional (2)



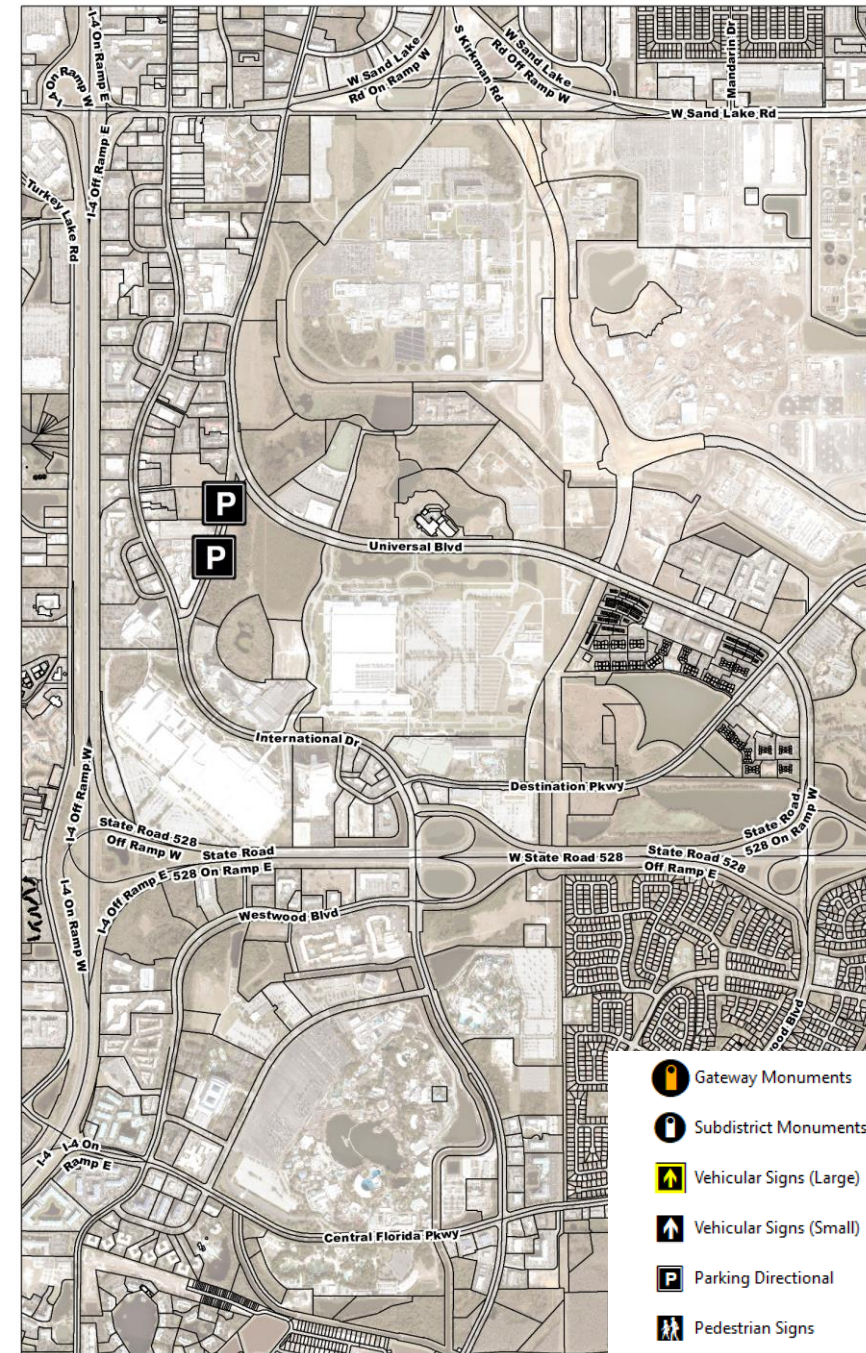
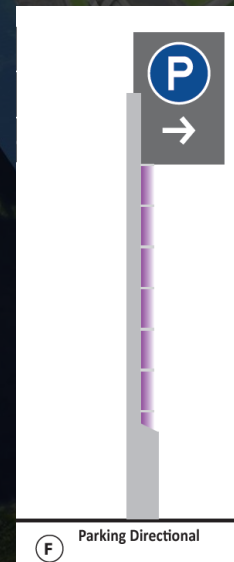
Updates on Phase One Locations

- 47 Signs – decreased due to additional CIP impacts (removed signs moved to Phase Two)
 - Targeted Install Phase One Early 2024 (Halfway Point of Project is March 2024)
- Composition
 - Gateway Monuments (6)
 - Subdistrict Monuments (3)
 - Vehicular Signs – Large (9)
 - Vehicular Signs – Small (27)
 - Parking Directional (2)



Updates on Phase One Locations

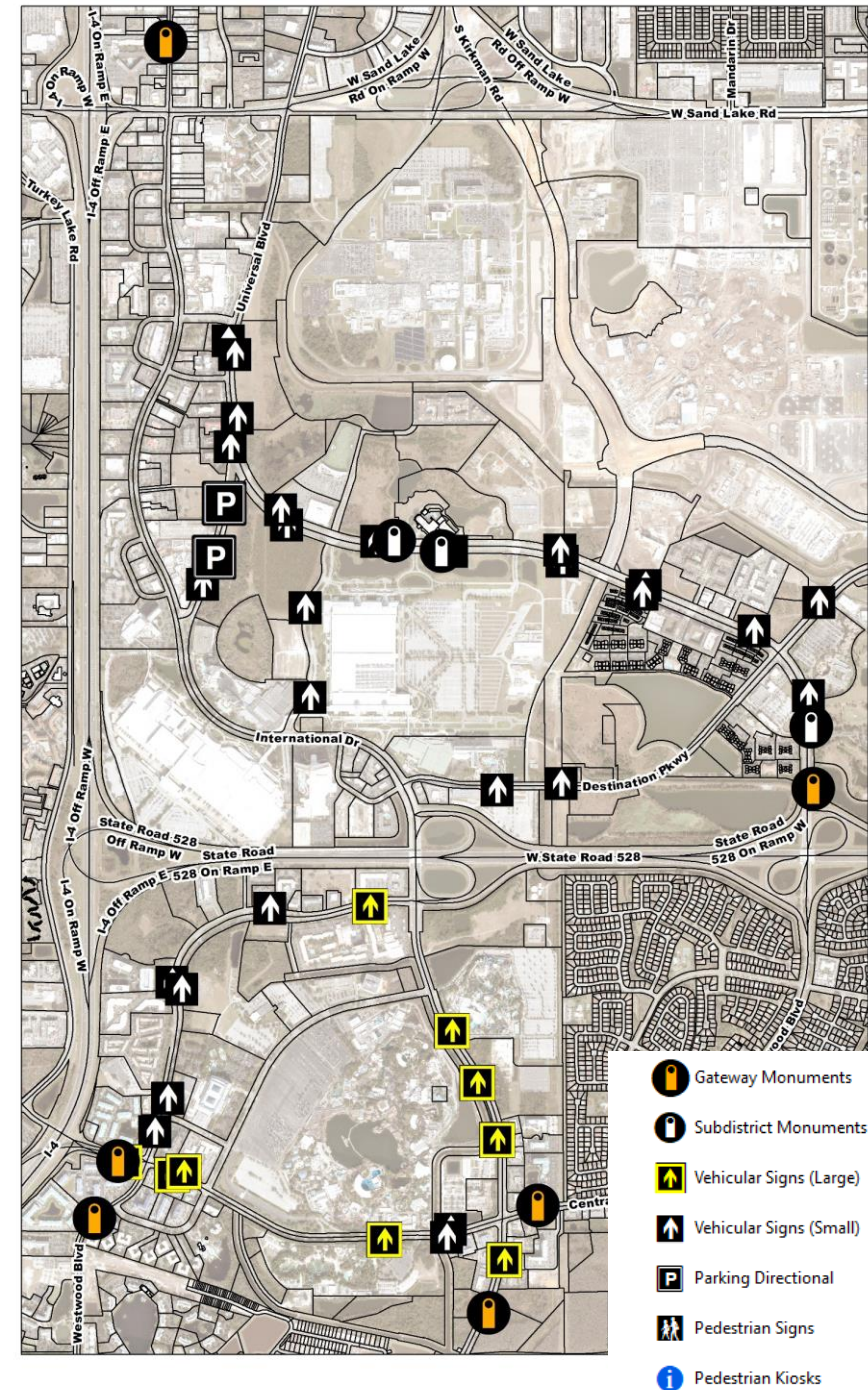
- 47 Signs – decreased due to additional CIP impacts (removed signs moved to Phase Two)
 - Targeted Install Phase One Early 2024 (Halfway Point of Project is March 2024)
- Composition
 - Gateway Monuments (6)
 - Subdistrict Monuments (3)
 - Vehicular Signs – Large (9)
 - Vehicular Signs – Small (27)
 - Parking Directional (2)



- Gateway Monuments
- Subdistrict Monuments
- Vehicular Signs (Large)
- Vehicular Signs (Small)
- Parking Directional
- Pedestrian Signs
- Pedestrian Kiosks

Updates on Phase One Locations

- 47 Signs – decreased due to additional CIP impacts (removed signs moved to Phase Two)
 - Targeted Install Phase One Early 2024 (Halfway Point of Project is March 2024)
- Composition
 - Gateway Monuments (6)
 - Subdistrict Monuments (3)
 - Vehicular Signs – Large (9)
 - Vehicular Signs – Small (27)
 - Parking Directional (2)

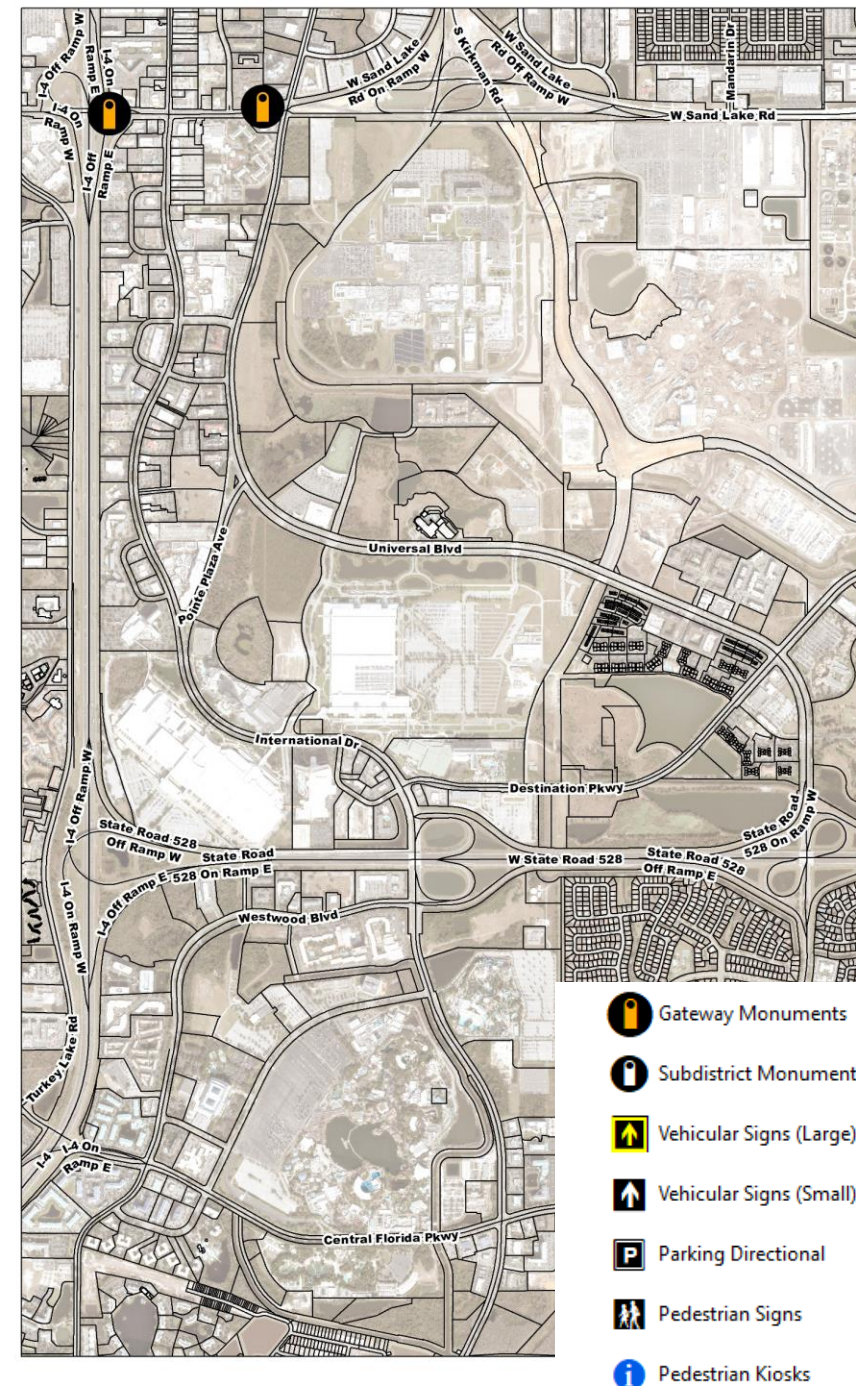
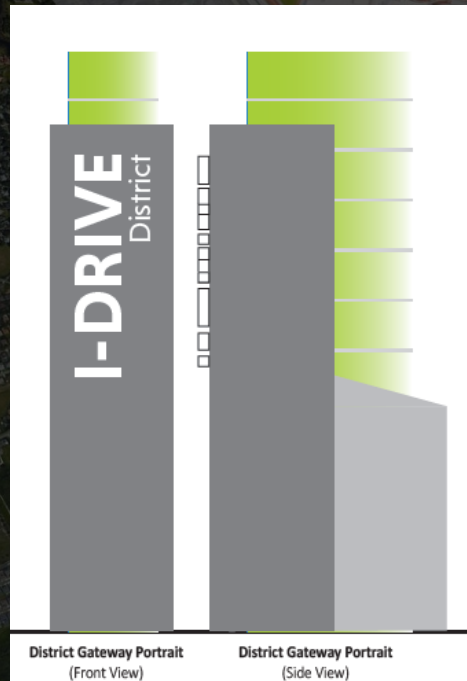


Ongoing Capital Improvement Projects Impacting Phase Two

- I Drive Transit Lanes
- I Drive Easement Project
- Tradeshow Extension/Widening
- Via Mercado Improvements
- TFATA Study
- I Drive Pedestrian Bridge
- I Drive and Sand Lake Interchange (FDOT)
- Additional Traffic Signals

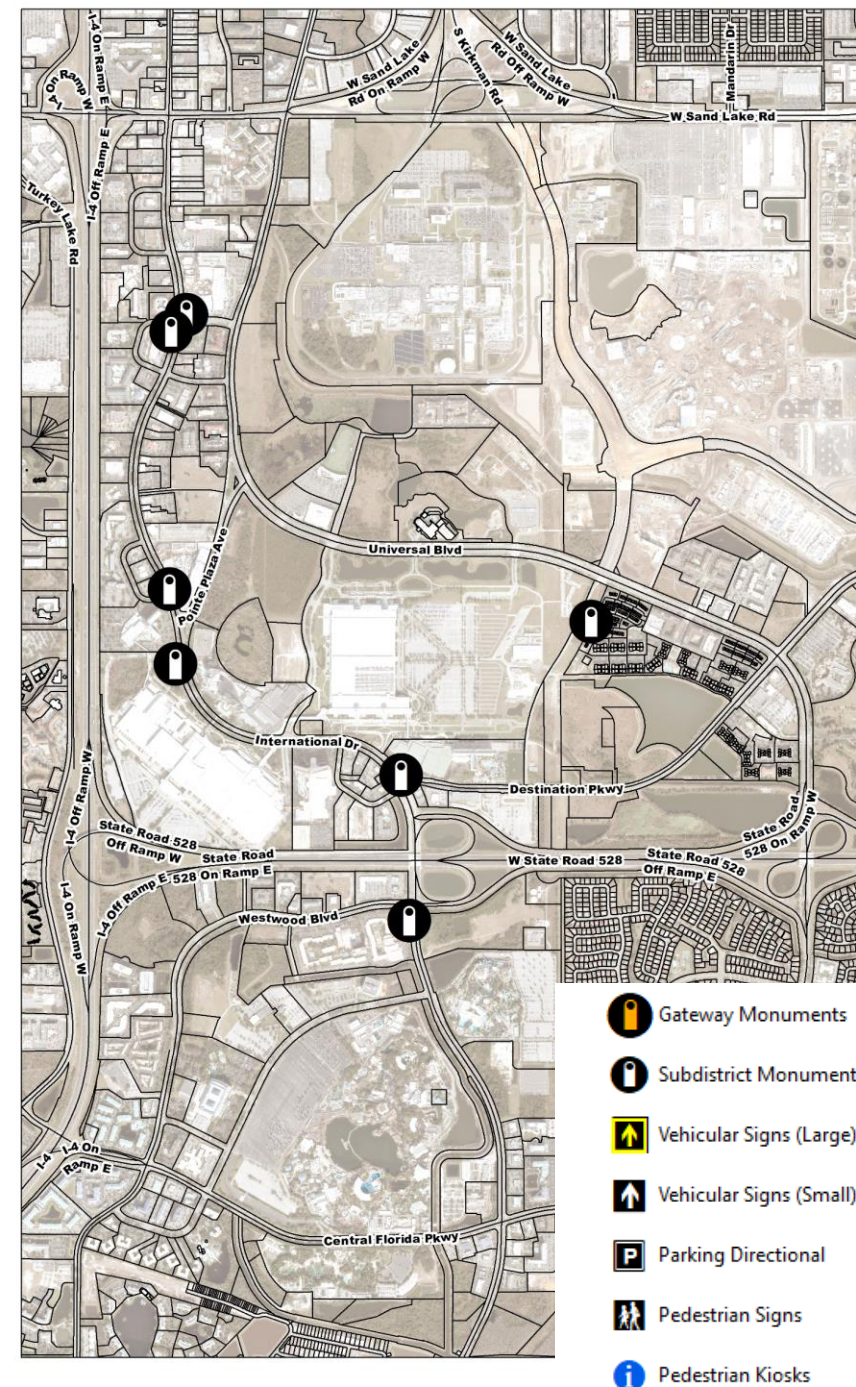
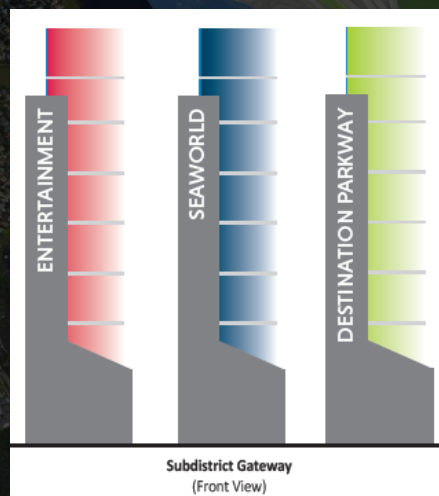
Updates on Phase Two Locations

- 130 Signs – increased due to CIP changes
 - Utility Cross Referencing ongoing
 - Targeted Install no later than March 2025
- Composition
 - Gateway Monuments (2)
 - Subdistrict Monuments (7)
 - Vehicular Signs – Large (8)
 - Vehicular Signs – Small (24)
 - Parking Directional (7)
 - Pedestrian Signs (32)
 - Pedestrian Kiosks (50)



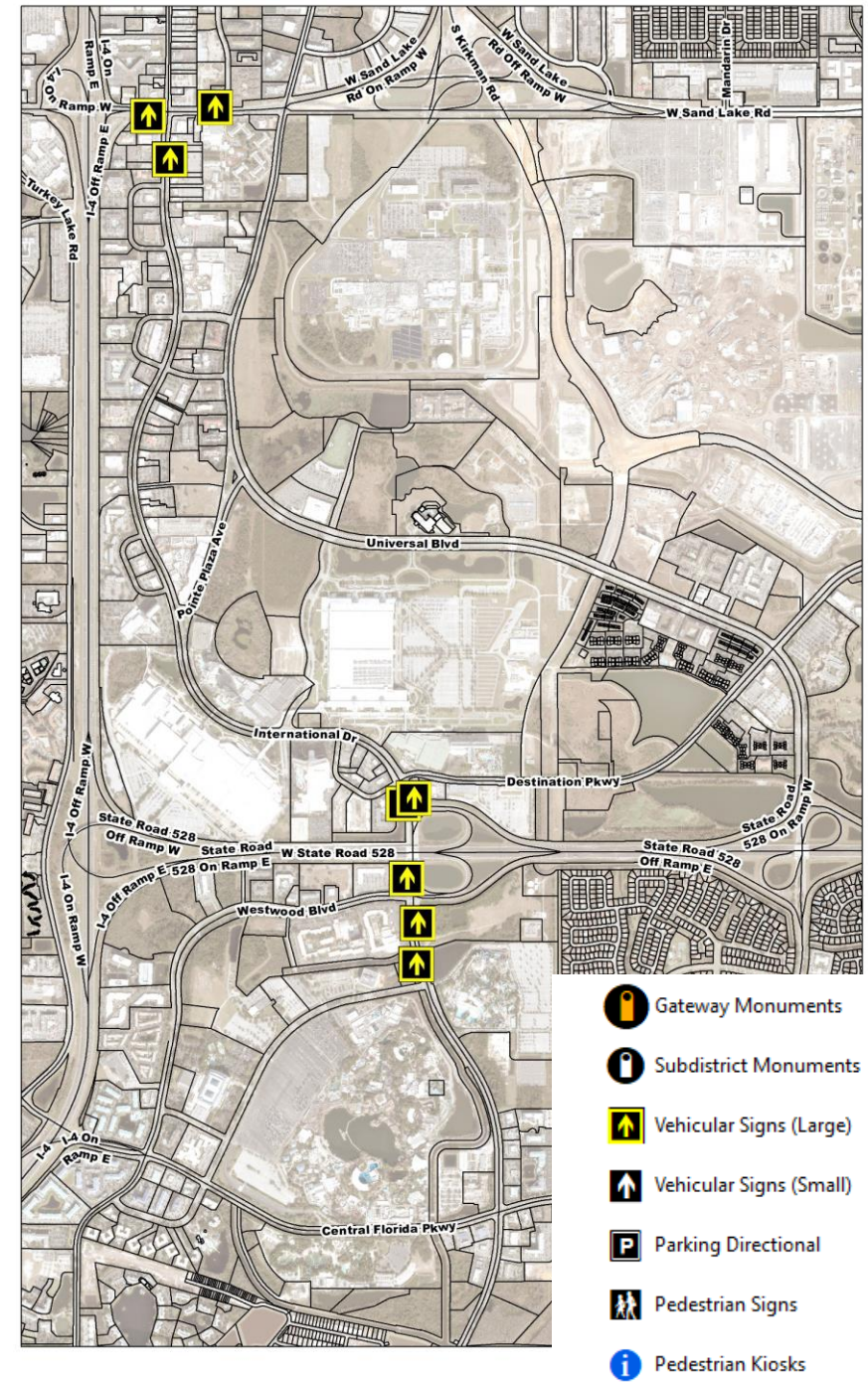
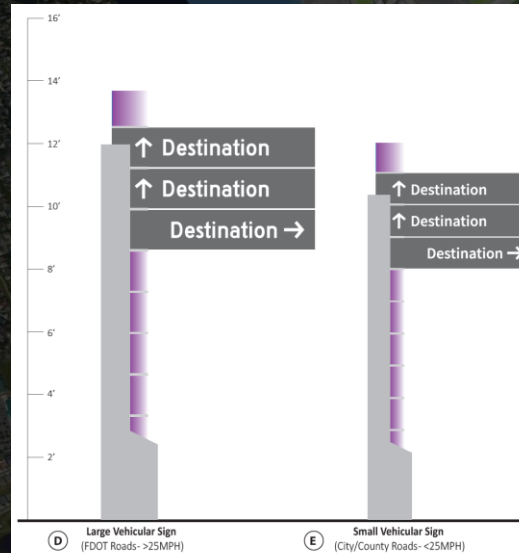
Updates on Phase Two Locations

- 130 Signs – increased due to CIP changes
 - Utility Cross Referencing ongoing
 - Targeted Install no later than March 2025
- Composition
 - Gateway Monuments (2)
 - Subdistrict Monuments (7)
 - Vehicular Signs – Large (8)
 - Vehicular Signs – Small (24)
 - Parking Directional (7)
 - Pedestrian Signs (32)
 - Pedestrian Kiosks (50)



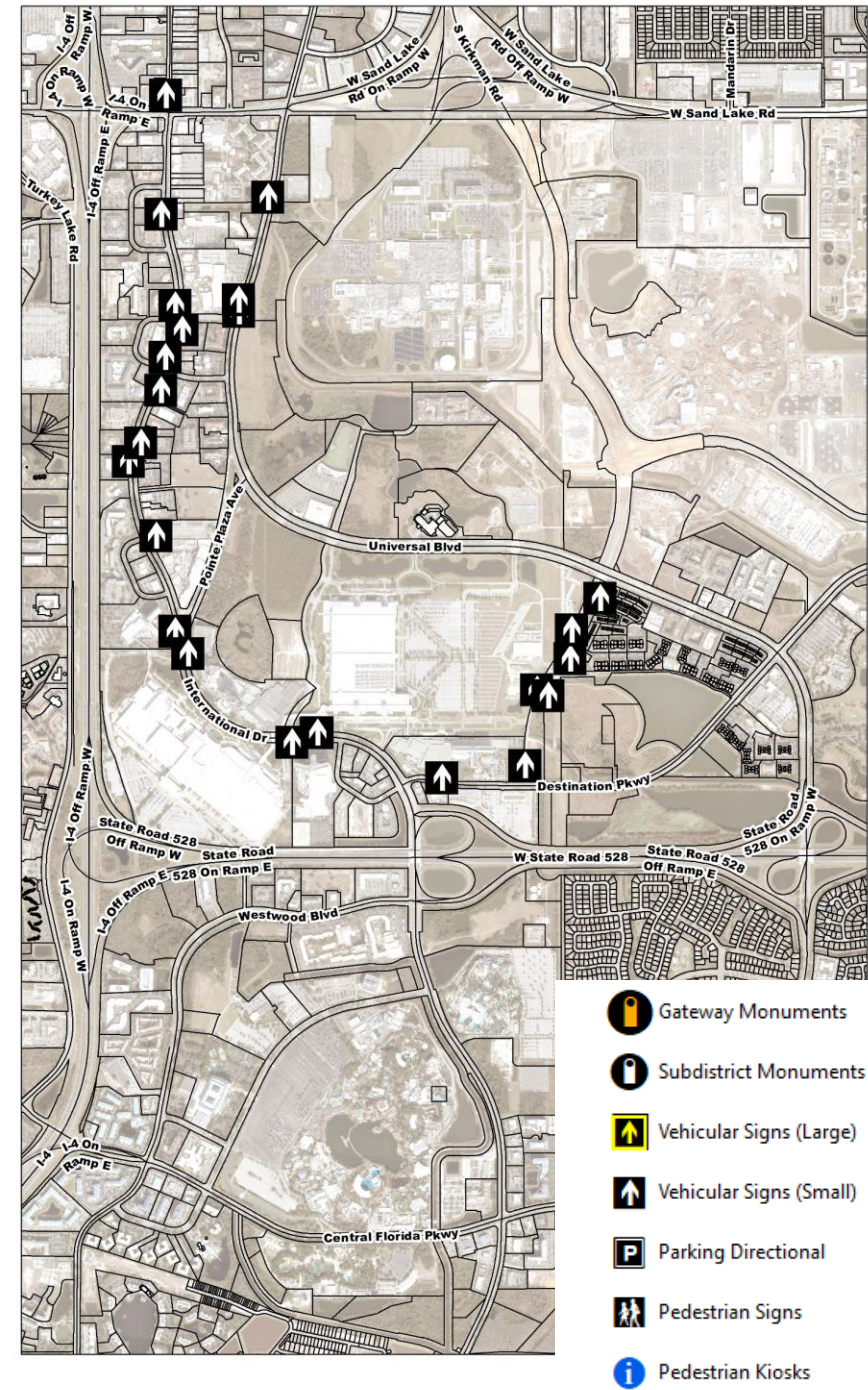
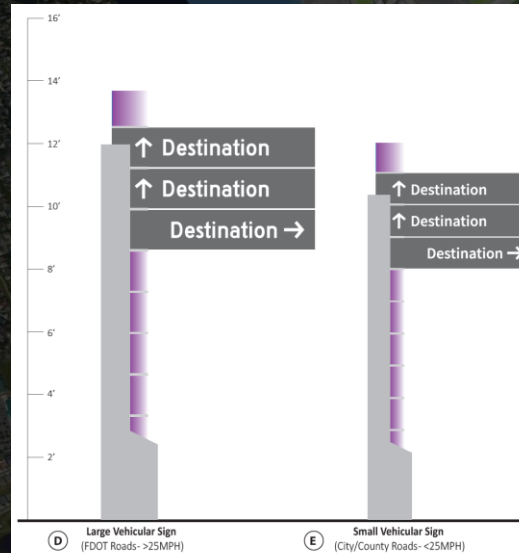
Updates on Phase Two Locations

- 130 Signs – increased due to CIP changes
 - Utility Cross Referencing ongoing
 - Targeted Install no later than March 2025
- Composition
 - Gateway Monuments (2)
 - Subdistrict Monuments (7)
 - Vehicular Signs – Large (8)
 - Vehicular Signs – Small (24)
 - Parking Directional (7)
 - Pedestrian Signs (32)
 - Pedestrian Kiosks (50)



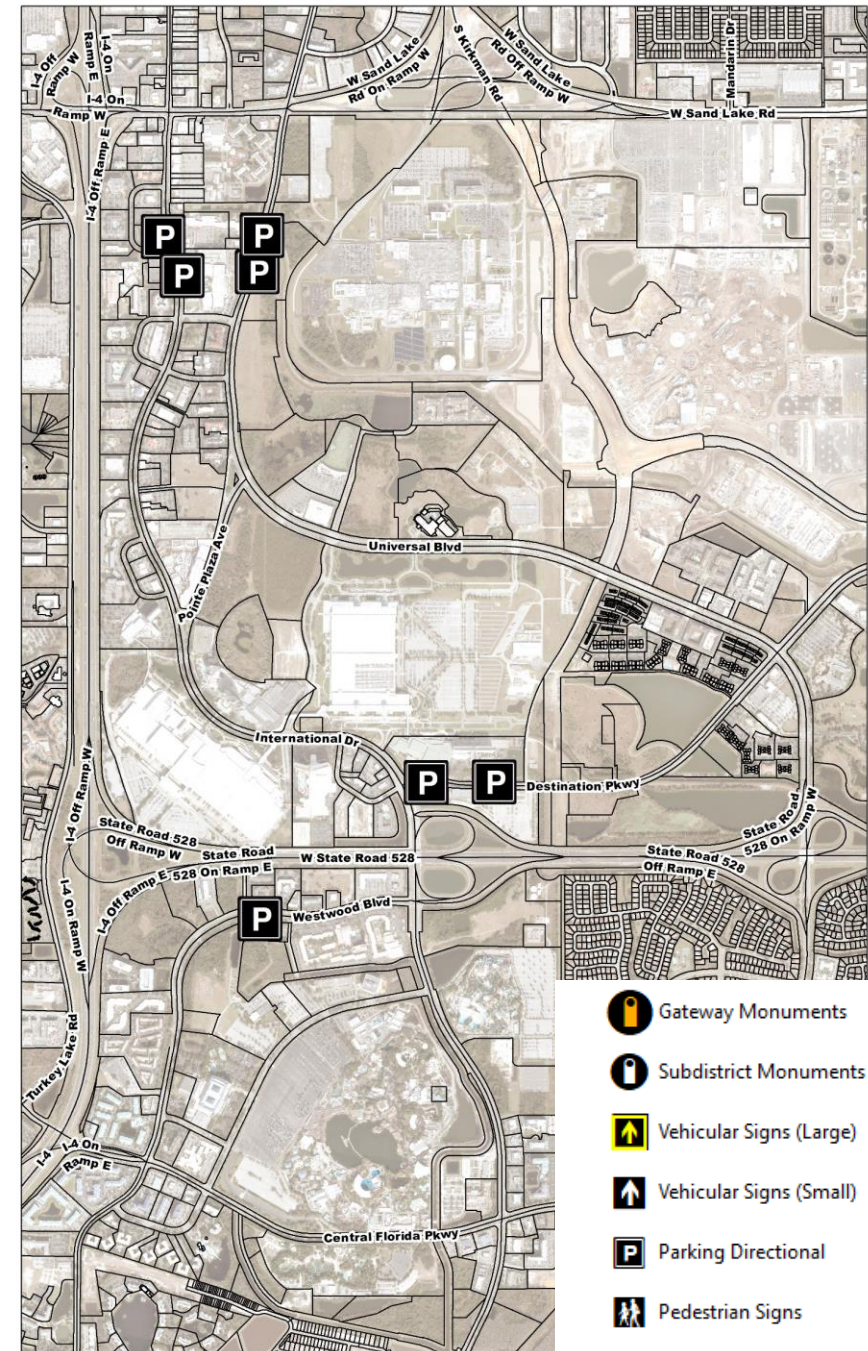
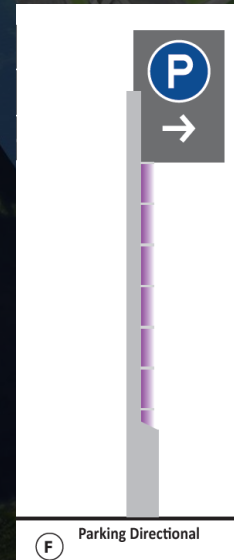
Updates on Phase Two Locations

- 130 Signs – increased due to CIP changes
 - Utility Cross Referencing ongoing
 - Targeted Install no later than March 2025
- Composition
 - Gateway Monuments (2)
 - Subdistrict Monuments (7)
 - Vehicular Signs – Large (8)
 - Vehicular Signs – Small (24)
 - Parking Directional (7)
 - Pedestrian Signs (32)
 - Pedestrian Kiosks (50)



Updates on Phase Two Locations

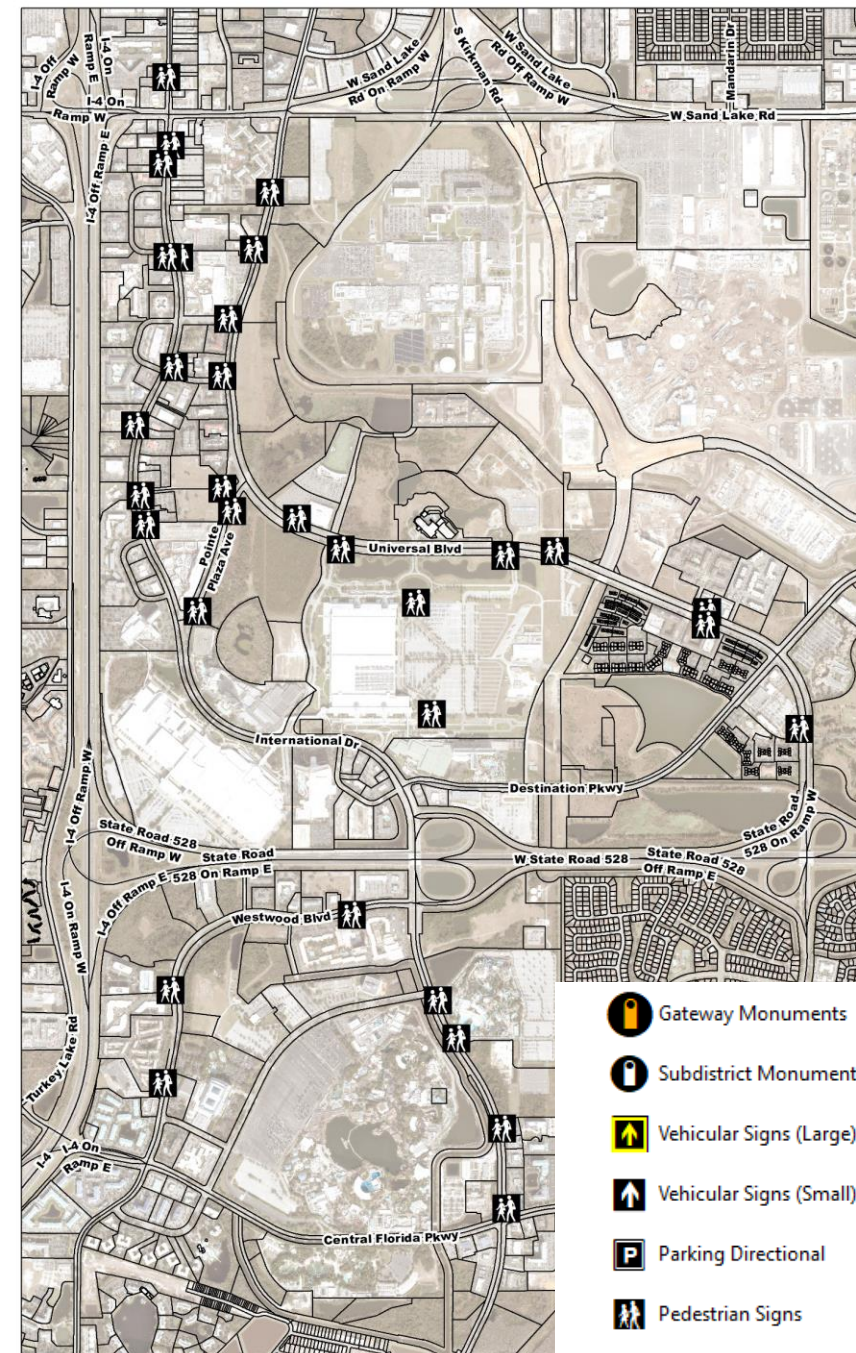
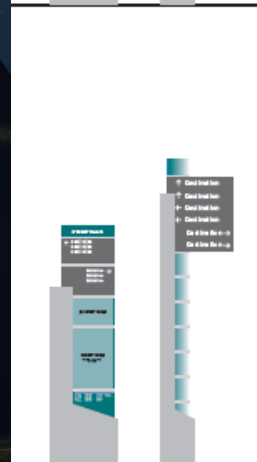
- 130 Signs – increased due to CIP changes
 - Utility Cross Referencing ongoing
 - Targeted Install no later than March 2025
- Composition
 - Gateway Monuments (2)
 - Subdistrict Monuments (7)
 - Vehicular Signs – Large (8)
 - Vehicular Signs – Small (24)
 - Parking Directional (7)
 - Pedestrian Signs (32)
 - Pedestrian Kiosks (50)



- Gateway Monuments
- Subdistrict Monuments
- Vehicular Signs (Large)
- Vehicular Signs (Small)
- Parking Directional
- Pedestrian Signs
- Pedestrian Kiosks

Updates on Phase Two Locations

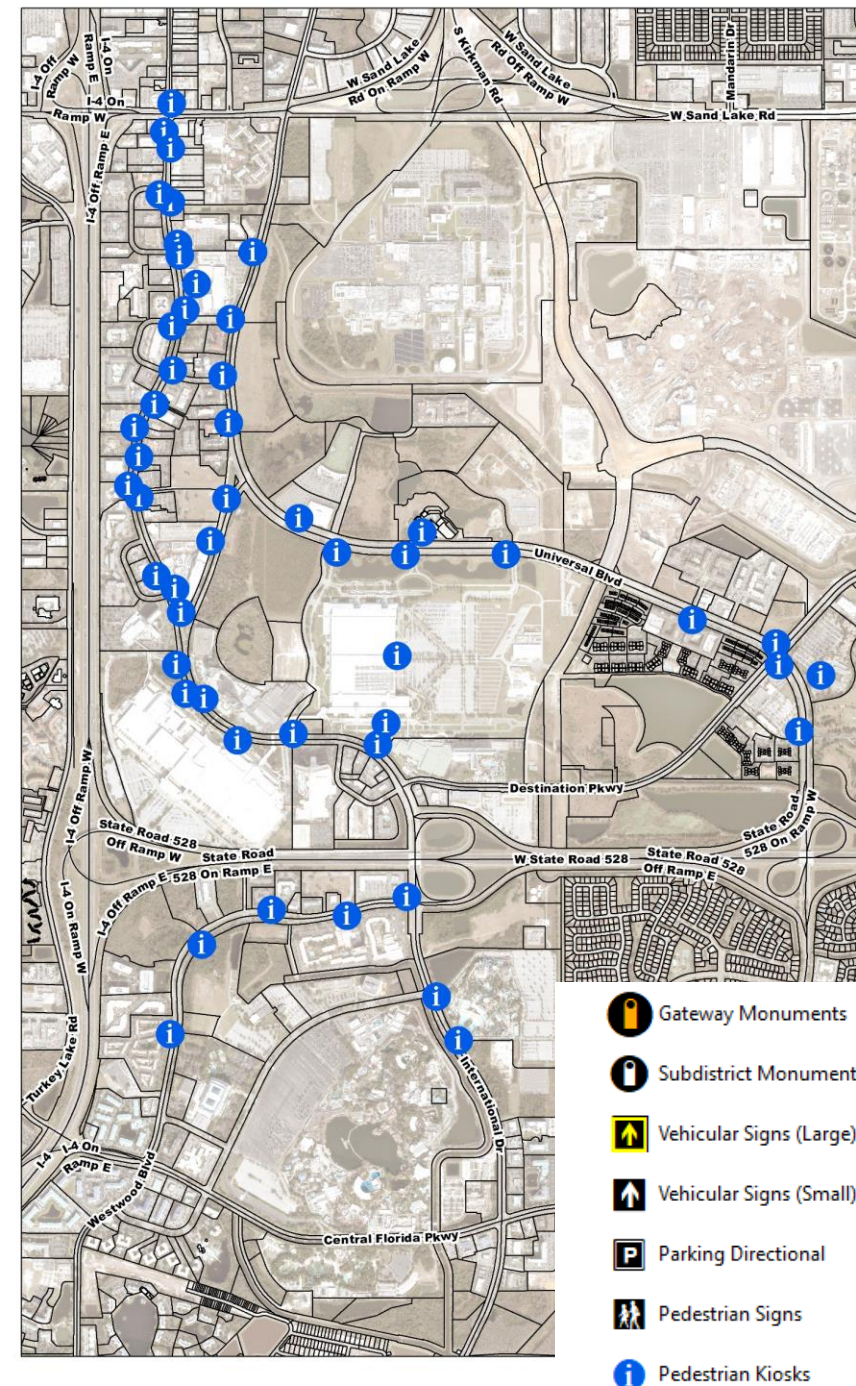
- 130 Signs – increased due to CIP changes
 - Utility Cross Referencing ongoing
 - Targeted Install no later than March 2025
- Composition
 - Gateway Monuments (2)
 - Subdistrict Monuments (7)
 - Vehicular Signs – Large (8)
 - Vehicular Signs – Small (24)
 - Parking Directional (7)
 - Pedestrian Signs (32)
 - Pedestrian Kiosks (50)

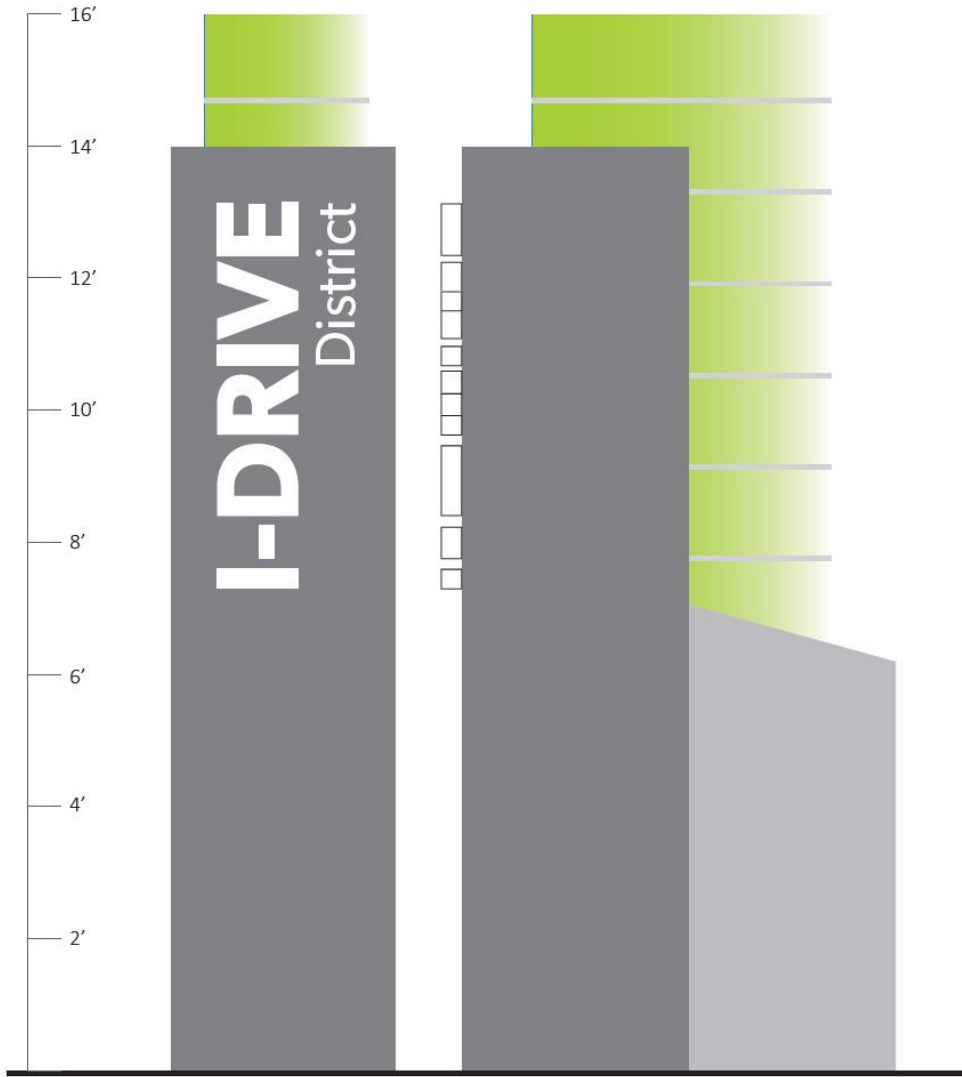


- Gateway Monuments
- Subdistrict Monuments
- Vehicular Signs (Large)
- Vehicular Signs (Small)
- Parking Directional
- Pedestrian Signs
- Pedestrian Kiosks

Updates on Phase Two Locations

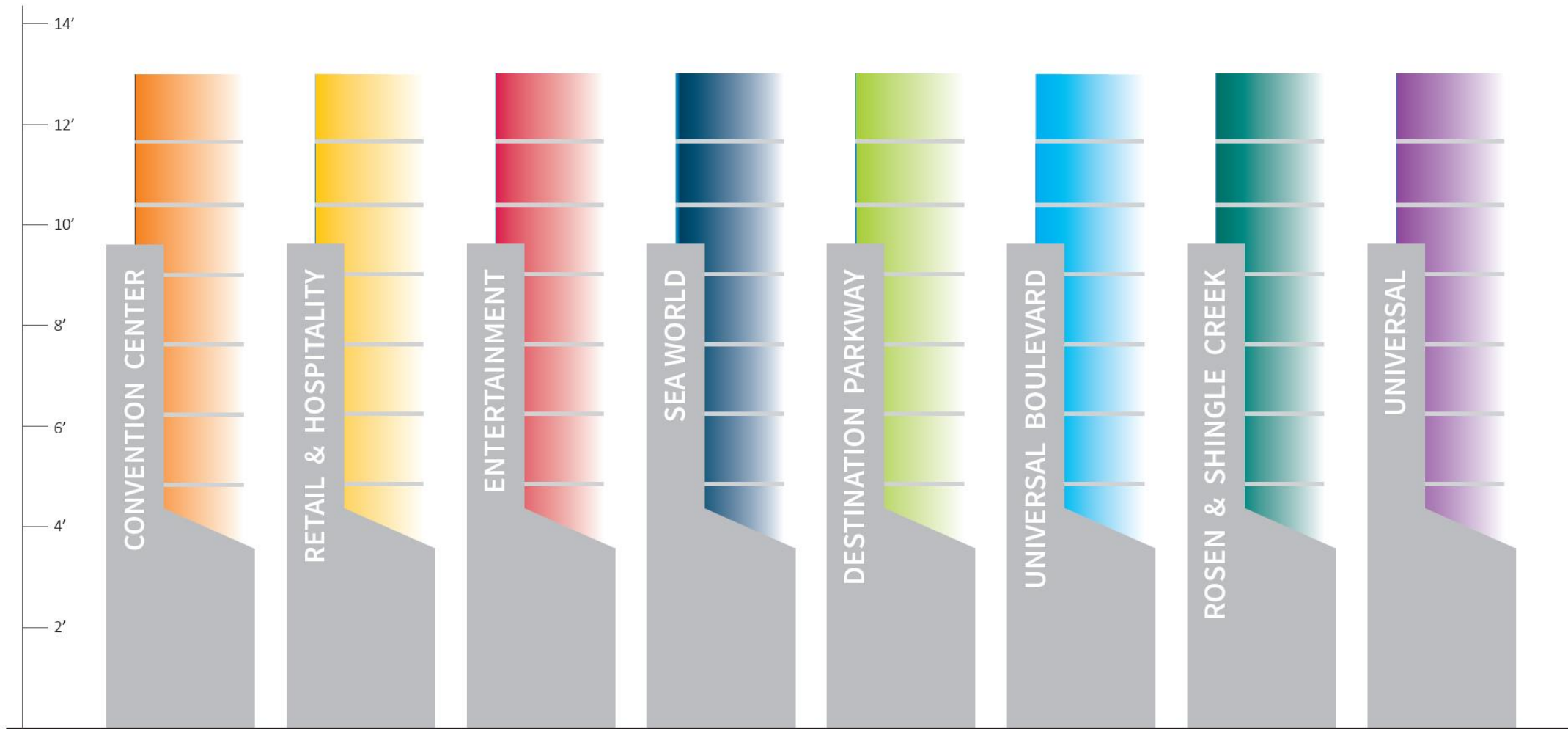
- 130 Signs – increased due to CIP changes
 - Utility Cross Referencing ongoing
 - Targeted Install no later than March 2025
- Composition
 - Gateway Monuments (2)
 - Subdistrict Monuments (7)
 - Vehicular Signs – Large (8)
 - Vehicular Signs – Small (24)
 - Parking Directional (7)
 - Pedestrian Signs (32)
 - Pedestrian Kiosks (50)





A District Gateway Portrait
(Front View)

District Gateway Portrait
(Side View)



C Subdistrict Gateway
(Front View)



D Large Vehicular Sign
(FDOT Roads - >25MPH)

E Small Vehicular Sign
(City/County Roads - <25MPH)

F Parking Directional

G Pedestrian Kiosk

H Pedestrian Directional
(Front View)

